



PPCH



SERVICES BOOKLET

303.424.6078

info@parkerpch.com

Boulder Location
3075 Pearl Parkway
Boulder, CO 80301

Primary Location
1597 Cole Blvd. Ste 300
Lakewood, CO 80401

Southeast Location
14001 E. Iliff Ave. Ste 112
Aurora, CO 80014

Pueblo Location
323 S. Union Ave
Pueblo CO, 81003

parkerpch.com



Parker Personal Care Homes, Inc. was founded in **1995**, and has grown from a single group home for adults with disabilities into a well-established organization providing a wide range of services.

The supports we offer include:



Clinical Services



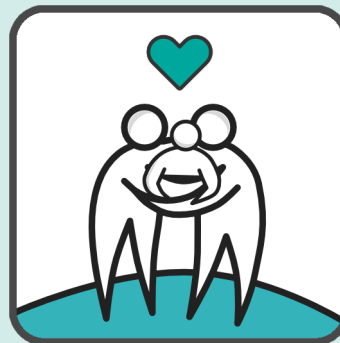
Residential Services



Supported Community Connections



Community Employment & Vocational Services



Foster Care

We believe that we have one of the most important jobs there is:

Enhancing the quality of people's lives. We gather the right tools and identify appropriate resources so individuals can make informed and healthy choices about their lives.



PPCH is Committed to Person-Centered Thinking

TREAT individuals and family members with dignity and respect.

HELP individuals and families become empowered to set and reach their personal goals.

RECOGNIZE the rights of individuals to make informed choices, and take responsibility for those choices and related risks.

BUILD on the strengths, gifts, talents, skills, and contributions of the individual and those who know and care about them.

FOSTER community connections in which individuals can develop relationships, learn, work, and produce income, actively participate in community life, and achieve their full potential.

PROMISE to listen and act on what an individual communicates.

PLEDGE to be honest when trying to balance what is important to and for the individual.

SEEK to understand individuals in the context of their age, gender, culture, ethnicity, belief system, social and income status, education, family, and other factors that make them unique.

ACKNOWLEDGE and **VALUE** families and support their efforts to assist family members.

RECOGNIZE and **SUPPORT** mutually respectful partnerships among individuals, their families, communities, providers, and professionals.

ADVOCATE for laws, rules, and procedures for providing services, treatment, and supports that meet an individual's needs and honor personal goals.

ENDORSE responsible use of public resources to assure that qualified individuals are served fairly and according to need.

Our mission is to build an inclusive and supportive community for the people we serve, and we are doing just that, **one individual at a time.**

TABLE OF CONTENTS

BEHAVIORAL AND PSYCHOLOGICAL SERVICES	4
UpRoutes	5
RESIDENTIAL SERVICES	
Family Caregiver Program	6
Children’s Extensive Supports (CES)	7
Supported Living Services	8
Independent Living	9
Host Homes	10
SUPPORTED COMMUNITY CONNECTIONS	11
FOSTER CARE	12
VOCATIONAL SERVICES	
Community-Integrated Employment	13
SustainAbility	14
Steamers / Jack’s	15

CLINICAL SERVICES



PPCH offers a wide range of psychological and behavioral services across Colorado. Our clinical team supports individuals, families, and service teams throughout the state. We serve children, adolescents, and adults in the intellectual and developmental disability (I/DD) community and across mental health needs, regardless of primary diagnosis. Our specialized services are frequently requested by the Division of Vocational Rehabilitation (DVR), courts, adult and child protection, and probation departments.

We currently serve clients in Adams, Arapahoe, Boulder, Denver, Jefferson, Weld, and other counties.

Our Behavioral Health team includes PhD-level, master's-level, licensed, and license-eligible clinicians experienced in diverse mental health needs

WE PROVIDE:

- Assessment, evaluation, counseling, consultation, and behavioral services
- Immigration evaluation services (including N-648)
- Sex offender-specific treatment and evaluation
- Drug and alcohol treatment and evaluation
- Psychological, developmental, and parental evaluations
- Services in the home, office, and community

For more information about our behavioral services, please contact behavioral@parkerpch.com.



UPROUTES ADVENTURE-BASED THERAPY

By combining therapy, outdoor adventure, and social interaction, UpRoutes creates a unique environment for addressing psychological supports for individuals who benefit from alternative interventions.

Supporting people across a wide range of ages, needs, disabilities, and supports, adventure therapy offers an alternative to the typical behavior and therapy support model. Building self-esteem, regulation, and social skills can help create resilience, leading to growth after trauma.



**UpRoutes adventure therapy
is effective for individuals who are:**

- Recovering from trauma or seeking alternative therapy
- Living with an intellectual and/or developmental disability
- Living with a traumatic brain injury
- Experiencing substance use disorders
- In foster care
- Are involved in the juvenile justice or adult court system

For more information about UpRoutes,
please contact uproutes@parkerpch.com.

FAMILY CAREGIVER PROGRAM



At PPCH, we recognize that family members often know their loved ones best. **Our Family Caregiver Program allows individuals to live with family while receiving paid day-to-day support from a designated family member.**



WE PROVIDE:

- Access to agency nursing staff
- Guidance from a program director and coordinator to navigate requirements and paperwork
- Individualized, state-required training tailored for family caregivers
- Respite care so families can focus on their own needs as well as those of their loved ones

For more information about our Family Caregiver Program, please contact residential@parkerpch.com.



CHILDREN'S EXTENSIVE SUPPORTS (CES)

PPCH's CES program provides intensive in-home services, funded through Medicaid, to eligible children and their families. These supports help children remain in their family homes while giving caregivers needed relief and assistance.

Our staff are trained in developmental disabilities and behavioral interventions to meet the individual needs of each child. We work closely with families to tailor services that support both the child and their caregivers.



Services available under CES include:

- Basic and enhanced homemaker support
- Community connector services
- Group and individual respite

For more information about our CES services, please contact residential@parkerpch.com.

SUPPORTED LIVING SERVICES (SLS)



PPCH is committed to promoting self-reliance, self-respect, personal responsibility, and independence for all individuals. Our Supported Living Services (SLS) program enables people to live in the setting of their choice while receiving individualized supports from highly trained staff.

We partner with families and caregivers to tailor services that meet each individual's needs. SLS providers help with grocery shopping, budgeting, developing self-advocacy skills, completing household tasks, and participating in group activities to build community connections.

SLS program opportunities include:

- Personal care
- Homemaker services
- Community Integrated Employment (CIE)
- Supported Community Connections (SCC)
- Respite
- Mentorship

For more information about our SLS services, please contact familyservices@parkerpch.com



INDEPENDENT LIVING (IL)

PPCH's Independent Living program supports individuals living in their own homes or apartments while receiving a range of residential services. PPCH staff work with each person to identify and secure housing that meets their needs and preferences.

Participants receive drop-in staff support along with opportunities for community activities and social engagement.

Staff provide assistance with:

- Daily needs
- Laundry and cleaning
- Cooking and shopping
- Medical management
- Scheduling and transportation for appointments

Members in the IL program may live in any approved housing they choose.



For more information about our IL services, please contact residential@parkerpch.com

HOST HOMES



PPCH's Host Home program provides individuals receiving comprehensive services the opportunity to live in a home and community of their choice while sharing their lives with others.

Host Home providers are PPCH contractors who complete thorough background screening and training to ensure exceptional, person-centered care.

PPCH host homes are located across the Denver metro area, Boulder, Northern Colorado, and the Western Slope. We partner with individuals, families, and providers to meet community needs, and administration regularly monitors host homes to ensure compliance with state regulations.

WE PROVIDE:

- 24/7 care and supervision
- Health and safety assessments and planning
- Transportation, daily living assistance, and support for independence
- Guidance with informed decision-making
- Nursing case management
- Advocacy
- Wraparound supports to meet individual needs

For more information about our Host Homes Program, please contact hothomeservices@parkerpch.com.



SUPPORTED COMMUNITY CONNECTIONS (SCC)

PPCH recognizes the importance of meaningful community access. Our Supported Community Connections (SCC) program helps individuals explore their communities, participate in recreational and volunteer activities, and build daily living skills.



Small groups, supported by PPCH staff and door-to-door transportation, have opportunities to:

- Volunteer with local nonprofit organizations
- Participate in recreational activities that promote a healthy lifestyle
- Visit local businesses to learn about potential work opportunities
- Practice money management through small purchases
- Explore museums, nature centers, and other community resources

For more information about our SCC services, please contact communityservices@parkerpch.com.

FOSTER CARE



PPCH's Foster Care program partners with Colorado counties to support children in need of safe, stable homes. Foster parents and children are matched carefully based on the child's needs and the foster parents' skills and experience.

The licensing process includes background checks and clinical home interviews to ensure quality and safety.



- Zero fees to become licensed
- Personal advocacy for you, your family, and your home
- Individualized supports
- A small team of dedicated professionals, available 24/7
- Monthly training provided by PPCH staff
- On-site behavioral, psychological, and nursing supports with shorter wait times for evaluations
- Strong partnerships with Colorado counties

For more information about our foster care services, please contact fostercareservices@parkerpch.com.



COMMUNITY INTEGRATED EMPLOYMENT (CIE)

Community Integrated Employment (CIE) connects people with intellectual and developmental disabilities to skills training and paid work opportunities.

Meaningful employment supports financial independence, builds self-confidence, and fosters a sense of belonging in the community. Workplaces also provide opportunities for social interaction, communication skill development, and natural support networks.

WE PROVIDE:

- Job coaching
- Situational vocational assessments
- Work adjustment training
- Discovery services
- Job development
- Employment retention support

We collaborate with the Colorado Department of Vocational Rehabilitation and other referral sources to connect individuals with the resources they need to succeed.

For more information about our CIE services, please contact ses@parkerpch.com.

SUSTAINABILITY



SustainAbility is a recycling company that partners with cities, residents, businesses, and hospitals to divert valuable materials from landfills.



Eligible PPCH members can work in SustainAbility's safe, supportive, and well-staffed environment across a variety of roles. We match individuals with work experiences that align with their abilities and interests while reducing barriers to individualized, community-integrated employment.

The FOCUS program at SustainAbility offers supported group employment for men with intellectual and/or developmental disabilities who are assessed as high risk due to behavioral concerns or a history of sexualized behaviors. SustainAbility collaborates closely with PPCH's Behavioral and Psychological Services department and licensed SOMB therapists to provide ongoing therapy and mentorship for participants, along with extensive training for staff.

Job opportunities include:

- Customer service
- Electronics disassembly
- Recyclables collection
- Sorting, categorizing, and processing materials for downstream recyclers
- Truck loading and materials delivery

For more information about SustainAbility, please contact **Melisa Kraai** at mkraai@parkerpch.com.



STEAMER'S / JACK'S

We believe people with disabilities contribute to their communities through meaningful employment. Every individual should have the opportunity to work in settings that promote growth, independence, and competitive wages.



Jack's Bar and Grill and Steamers Coffeehouse hire and train adults with intellectual and/or developmental disabilities to work in the coffeeshop and restaurant in a variety of customer service positions.

Job opportunities include:

- Customer service
- Food preparation
- Dishwashing
- Small-batch jam making
- Catering and food delivery

For more information about Jack's and Steamers, please contact **Scott Levya** at slevya@parkerpch.com.

OUR VALUES

COMMUNITY

We ensure that individuals have meaningful opportunities to participate in and contribute to their communities. Everyone at PPCH deserves to be part of an inclusive and supportive environment.

INNOVATIVE THINKING

We strive to develop creative approaches that honor the gifts, talents, and dreams of those we serve.

ACCEPTANCE & EQUALITY

We recognize and celebrate the unique talents each person brings to PPCH. We embrace differences and are committed to ensuring fair and equitable treatment for all.

PERSONAL GROWTH

We value the strengths individuals bring to their careers and believe that competitive, integrated work fosters independence, confidence, and a sense of belonging. At PPCH, we encourage continual learning and growth so everyone can achieve their best.

INDIVIDUALIZED APPROACH

We recognize that each individual has different strengths, goals, and challenges. We are committed to providing personalized solutions that reflect these differences.

FAMILY

We honor the essential role of family in an individual's happiness and success. We value the contributions families make in the lives of those we serve and support a healthy work-life balance for our employees.

COMPASSION

We prioritize empathy and strive to respect the diverse life experiences of everyone in our community.

